



*Whatever you need
for milling and turning
we offer the best.*

1979



GLOBAL MACHINE

Established in 1979, Roundtop has grown steadily in scale and scope become a public company listed on years experience in the design and tools, we have maintained the leading innovation, quality, and flexibility. customers the best

Whatever you need for Milling

COMPANY INTRODUCTION

3

FACTORIES

5

RESEARCH AND DEVELOPMENT

7

MANUFACTURING PROCESSES

9

QUALITY & SERVICE

11

INTERNATIONAL SALES

13



FORD®

TOOL SOLUTIONS

Machinery Industries Co., Ltd.

***of business. Today Roundtop has
the stock exchange. With over 20
manufacturing of precision machine
position in Taiwan through
Roundtop is dedicated to offering
in machine tools.***

and Turning We offer the best.



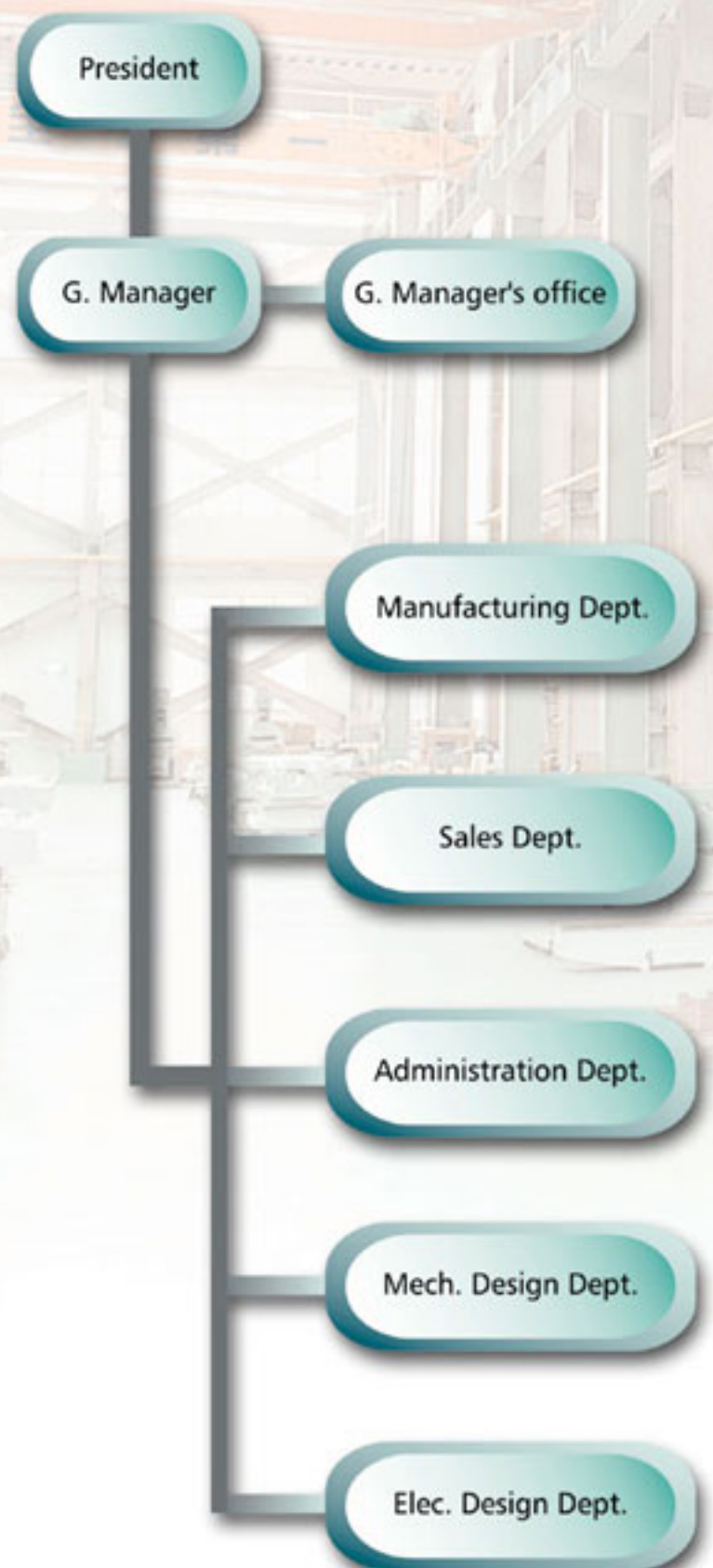
ROUNDTOP POLICY

ROUNDTOP POLICY

- **ABSOLUTE QUALITY**
- **SERVICE FIRST**
- **CUSTOMER SATISFACTION**

*The number one exporter
of CNC machining centers
from Taiwan in 1998.*

ORGANIZATION



COMPANY INTRODUCTION

ROUNDTOP MACHINERY INDUSTRIES CO., LTD.

The fact is ROUNDTOP has had very rapid growth since its establishment in 1979 (at that time producing only one model of conventional milling machine). We have made great achievements, and yet every day is an opportunity for greater achievements to be made.

- Brand of products: JOHNFORD
- Factories: 1. Fong Yeng Factory
2. Shen Kang Factory
- Number of employees: 250
- Official registered capital: US\$26,000,000
- Listed company no. 1540 in Taiwan stock exchange corporation. (<http://www.tse.com.tw>)

1979 Company was founded and started manufacturing milling machines. Then added, CNC mills and vertical machining centers in the next years.

1989 Added a brand new Fang Yeng factory for the mass production of machining centers, and CNC lathes. Also purchased Hewlett Packard HP-3000 mini system for computerized management.

1990 Awarded "A" class Trademark registered for CNC lathes from our National Bureau of Standard, Ministry of Economic Affairs. And was approved as "A" class factory by the Bureau of Commodity Inspection, Ministry of Economic Affairs.

1992 Became a public company and added many new products including:

- | | |
|---------------------------------------|------------------------|
| 1. Screw cutting CNC lathes(patented) | 5. Flat-bed CNC lathes |
| 2. Horizontal machining centers | 6. Vertical CNC lathes |
| 3. Double column machining centers | 7. FMS and automation |
| 4. CNC forging machines(patented) | |

1995 ISO 9002 certified by the international accredited, DNV.

1996 Obtained the "It's very well made in Taiwan" mark on JOHNFORD VMC and TC machines.

1997 SV super verticals and ST super turning centers developed.

1998 5-face (and 5-axis) double column machining centers developed.

EMC certified by the international accredited, TRL-981102-32.

1999 Became a listed company in OTC Taiwan.

2000 Added a brand new U.S.\$24 million Shen Kang factory for the production of very large CNC machine tools.

2001 Small and medium DMC developed.
ISO 9002 certified by the international accredited, entela.

2002 SDMC-11000x2500-2H & SV-33/41/48 developed.
Became a listed company in Taiwan stock exchange corporation.

2003 ISO 9001: 2000 certified by TÜV.

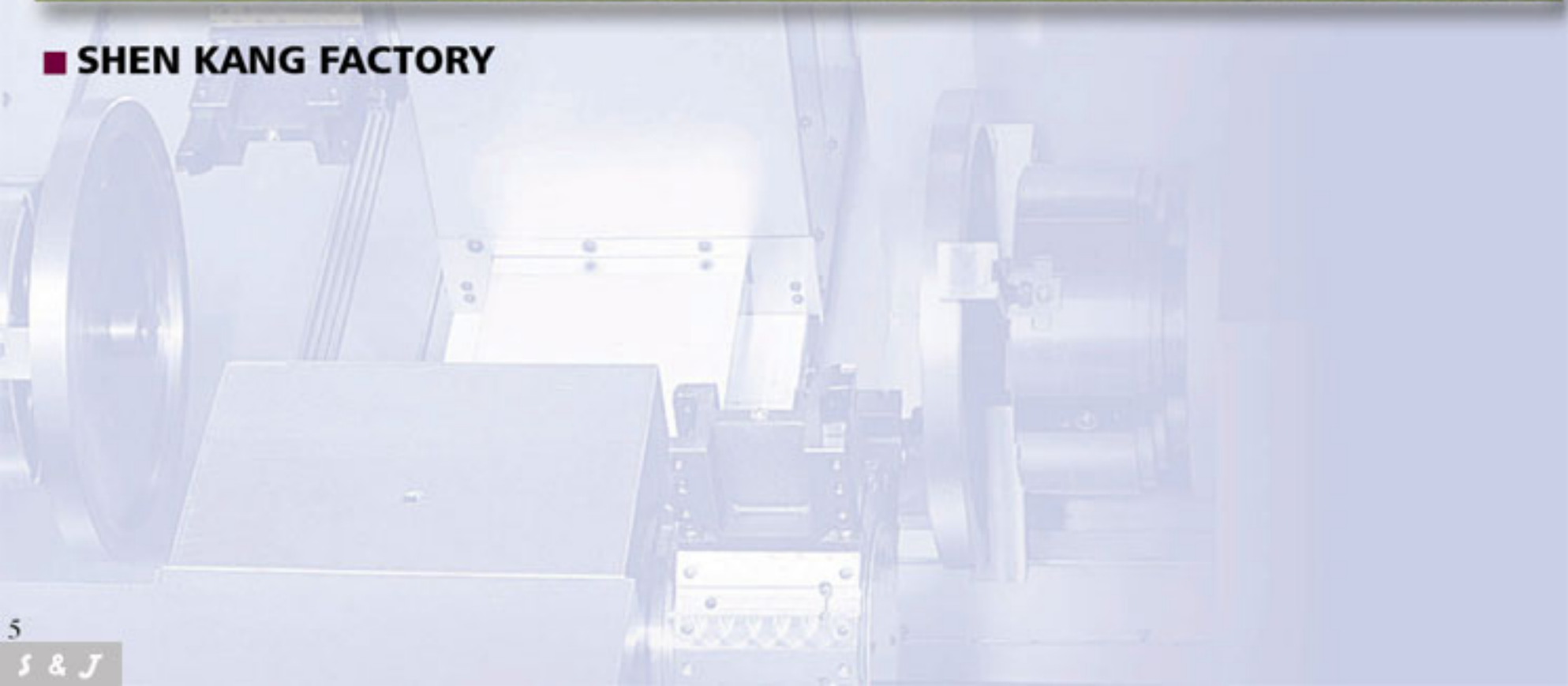
2004 SDMC-28000-2H developed.

2005 New types of 5-axis and 5-face heads developed.
Purchased ERP system for company e-management and developed PDM system for R & D e-management.





■ SHEN KANG FACTORY





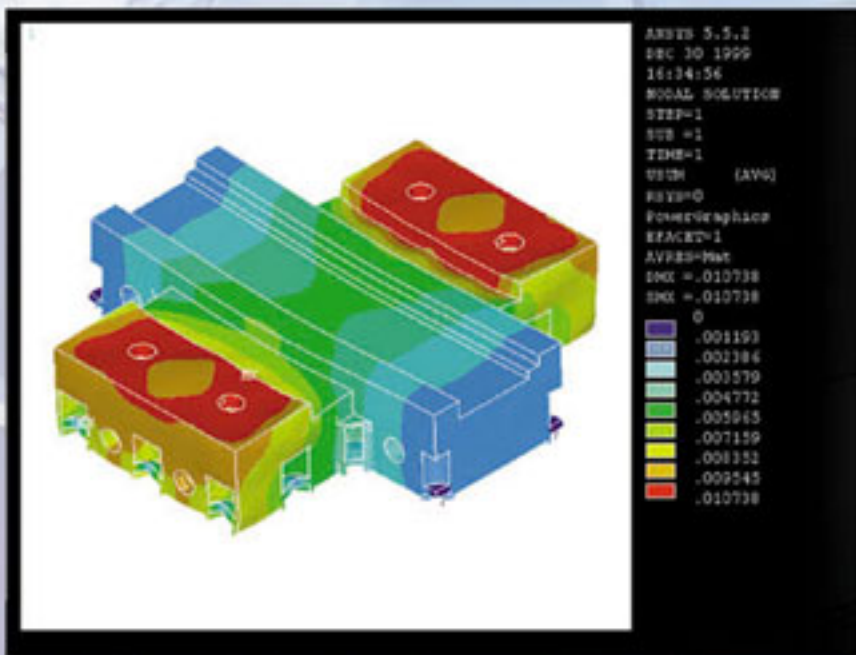
FACTORES

MODERN FACILITES

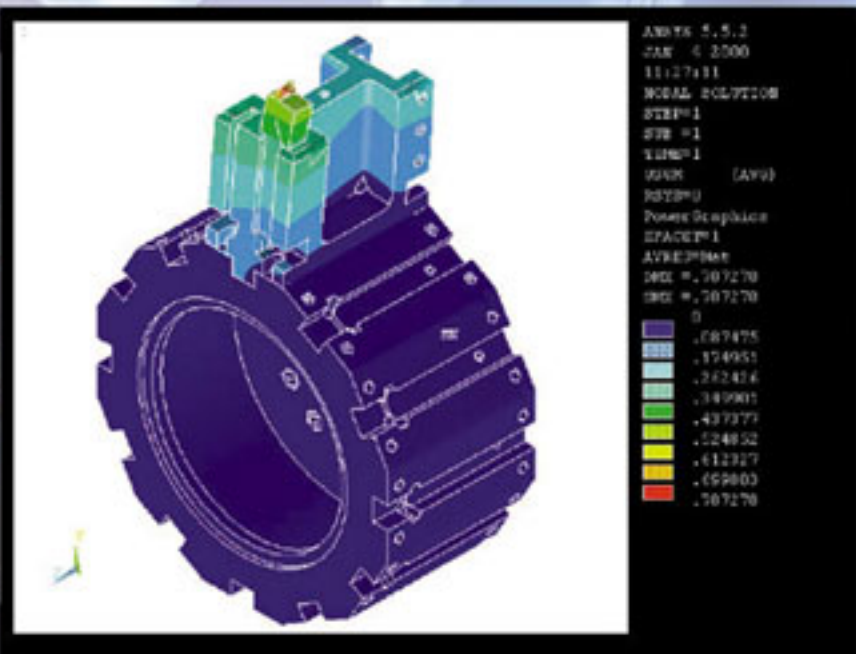
Our modern facilities include an earthquake proof computerized 8 stories office building. This excellent working environment provides a solid foundation for us to manufacture the best quality machines. These facilities enable us to deliver a broad range of standard and special machines with a short lead time.



■ FONG YENG FACTORY



● Computer Aided Design for Optimization



● Finite Element Analysis (FEA)



● PLC

RESEARCH AND DEVELOPMENT

CONTINUOUS R & D FOR QUALITY, RELIABILITY, AND TECHNOLOGY

With experienced designers and the advanced facilities of our R & D department, we constantly develop and produce high performance new models. Our R & D engineers employ the latest Finite Element Analysis software to ensure maximum design performance. Our wide range of machines include: Vertical CNC lathes, Vertical machining centers, Horizontal machining centers, 5-face and 5-axis (Sliding) Double column machining centers, Slant bed turning centers, Flat-bed CNC lathes, CNC liquid forging machines (patented) and Screw cutting CNC lathes (patented).



● R & D Department



● CNC Department



● Reliable Electrical Assembly



● Foundry




● High Precision Assembly

MANUFACTURING PROCESSES

WELL PLANNED
MANUFACTURING PROCESSES
ENSURE MAXIMUM
DEPENDABILITY AND QUALITY

Roundtop insists on excellent quality. For over 20 years, we have paid special attention to improving the entire manufacturing process. From casting to precision grinding, from assembly to final inspection, each step throughout the manufacturing processes is strictly controlled. Roundtop machines are both ISO 9000 and CE certified.

A photograph of a foundry interior. Molten metal is being poured from a ladle into a mold, creating a large, bright orange and yellow flame. The scene is industrial and brightly lit.

● Foundry



● Precision Spindle Assembly



● High Quality by Precision Inspection.



● Laser Measurement



● Spindle Quality Testing.

QUALITY & SERVICE

DEPENDABILITY, QUALITY, AND SERVICE

"Priority service, business perpetuity, and mutual benefit" is our mission statement. Furthermore, we are serious about quality, customer input, and reacting to market demands. Roundtop's fully equipped quality control department performs the final inspection of the machine and in process inspection of parts. Our quality control personnel are well trained to conduct rigorous inspections by using precision, sophisticated instruments. We deeply believe that quality is the life of our company and customer service is the power that drives our company forward.



● Gear Measurement



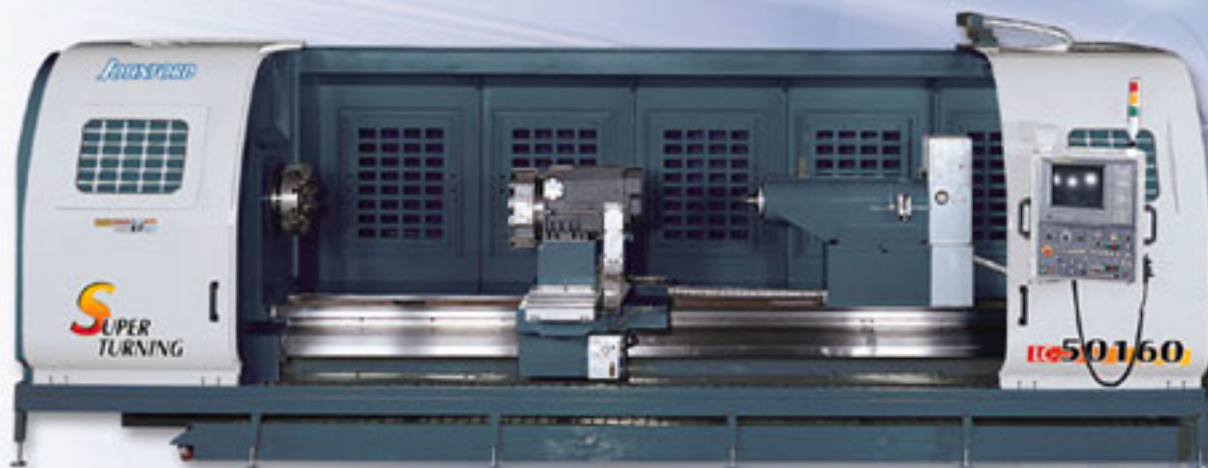
● Ultra-precision CMM.



● SL-35



● SV-48



● LC-50160



● ST-130



● 5-Axis



● 5-Face



● DMC-4000

5-axis and 5-face machining center available



● VTC-650



● DMC-1500



INTERNATIONAL SALES

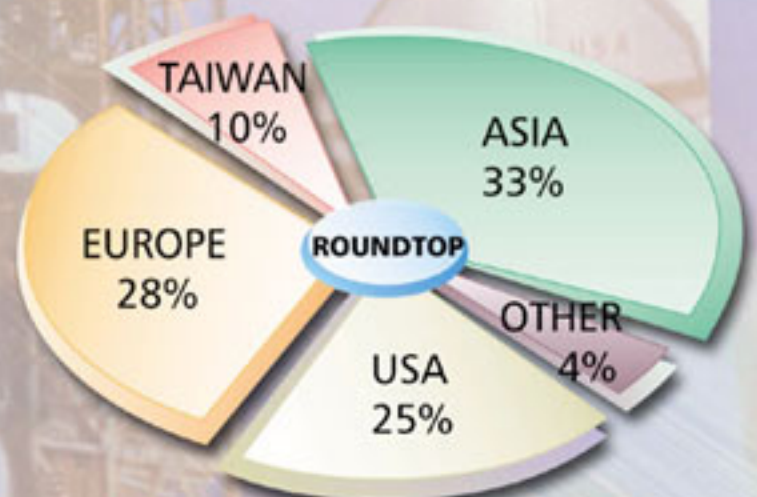
MEETING THE WORLDWIDE MARKET NEEDS THROUGH CONTINUOUS BUSINESS INNOVATION

Over the last 20 years, Roundtop has established a worldwide sales network. We are dedicated to provide customers with the best, highly value added machines. Roundtop has earned a strong reputation in design and manufacturing of a wide variety of CNC machine tools. We continuously improve the performance level of our machines, strengthen our quality control system, and offer worldwide support services. Our dedication to the global marketplace will create a new era of CNC machine tools.



● HMC-630

WORLDWIDE SALES





ROUNDTOP MACHINERY IND. CO., LTD.

No.1056, Zhongshan Rd., Shengang Shiang,
 Taichung County 429, Taiwan
 Tel : 886-4-2562-4721
 Fax: 886-4-2561-3886
 http: //www.johnford.com.tw
 E-mail: johnford@johnford.com.tw